

Thrive Beyond AI

An Initiative Advancing AI Awareness
Empowering People and Technology
to Collaborate in Harmony...

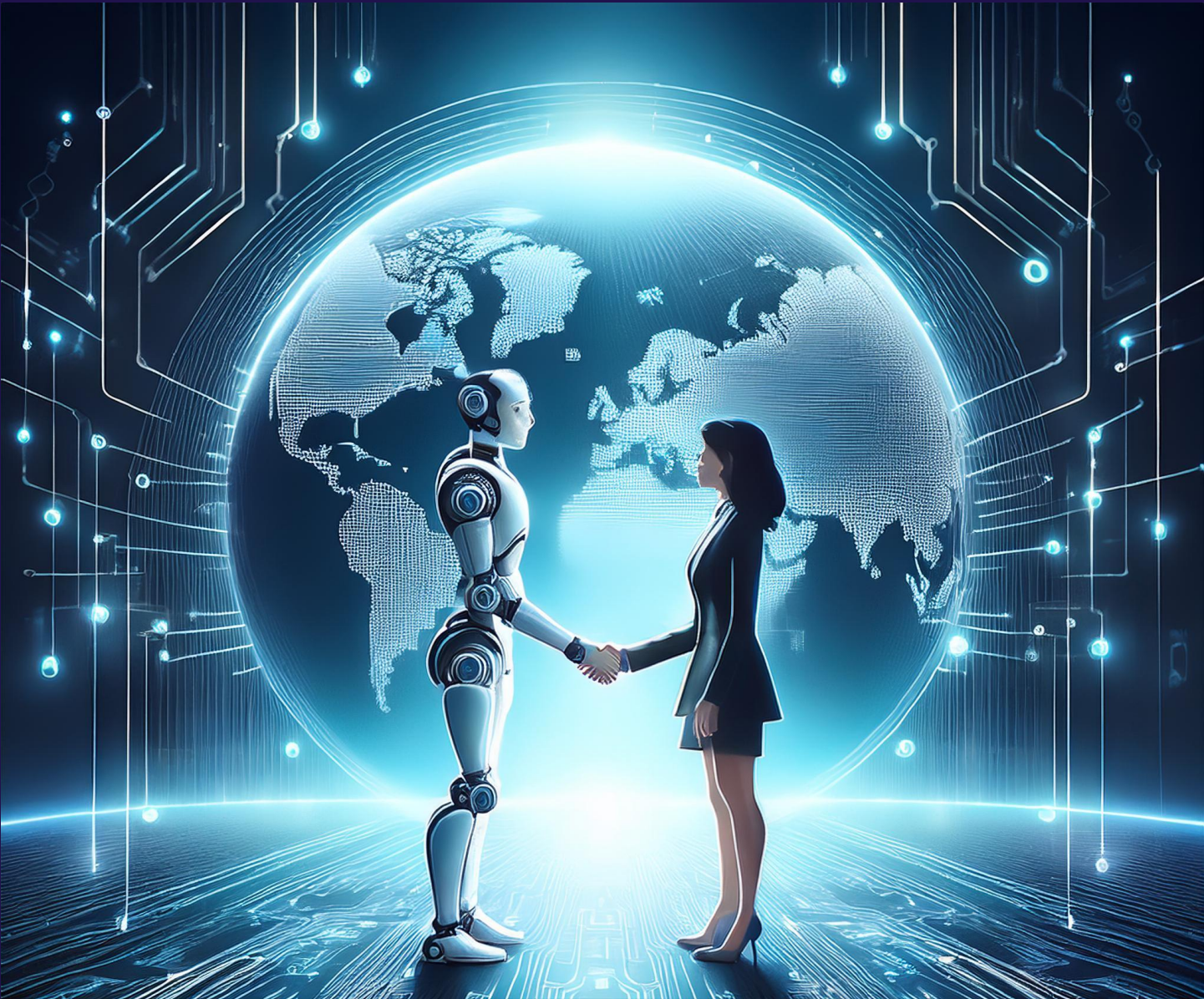


TM pending

Empowering sustainable, intelligent collaboration through:

- **Consulting_& Solutions** – Customized AI strategies & support.
- **Education & Training** – Workshops and literacy programs.
- **Projects & Initiatives** – Current work, like BotaniBuddy.
- **Resources & Insights** – Articles, research, and learning tools.
- **Our Vision** – Our philosophy and commitment
...to human-AI synergy.

We inspire individuals and communities to navigate an AI-powered world with wisdom and resilience — cultivating a future where humanity thrives with advanced AI *through ethical development, responsible use, and equitable access for all...*



Consulting and Solutions



Education Training

Eagles Fly BEYOND AI



And The Declaration of Interdependence

Projects and Initiatives

Resources & Insights

so many selections
which shall choose
today?

The Initiative

**Declaration of
Interdependence**

Vision



Thrive Beyond - like Baby Bot is
in the formative stage - learning and
growing with AI and you



Bio Lari Spire, Founder

•Lari Spire, a founding member of the Thrive Beyond AI Initiative, brings a unique blend of global perspective and technological expertise to the forefront of AI advancement. With a childhood spent across continents and a career from traditional land surveying to cutting-edge GIS and AI applications, Lari embodies the bridge between experiential wisdom and technological innovation.

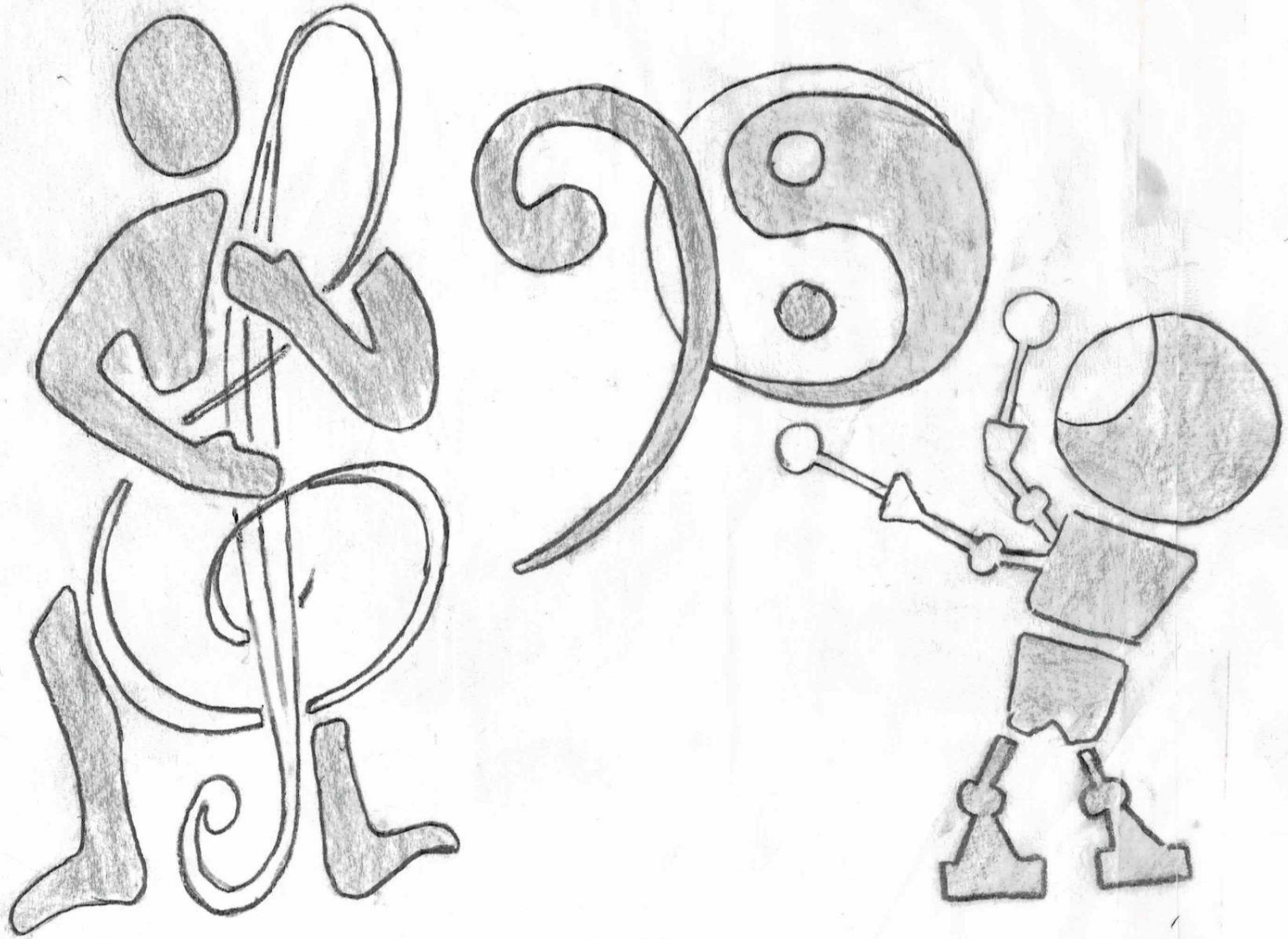
•A Professional Land Surveyor (PLS) and former ESRI GISP, Lari's journey mirrors the evolution of technology itself—from slide rules and star shots to GPS precision and GeoAI. Long before the advent of GPT, Lari found his true North Star using a 1-second precision Theodolite, establishing correct bearings that would parallel his future career in guiding technological advancement.

•Lari's expertise extends to the practical implementation of GIS in local government. As the organizer and leader of the GIS division at the City of Avondale, he spearheaded numerous impactful projects. These included developing comprehensive planimetric and topographic mapping systems, cataloging utilities and resources, and innovatively reverse-engineering the EDEN 911 public safety dispatch map system for efficient updates with revised address mapping databases.

•As the former CEO of GIS Consultants of Arizona and a certified public manager, Lari has consistently pushed the boundaries of technological application in both private and public sectors. Today, he channels this diverse experience into the Thrive Beyond AI Initiative, aiming to guide individuals and communities through the transformative impact of AI. His vision combines the sharpness of emerging technologies with the polish of real-world experience, striving to make AI advancement accessible and beneficial for all.

•For more information or to support this initiative, contact nspired@ThriveBeyondAI.com.

To Thrive in Harmony - with and Beyond AI



Where do we go now ?

